

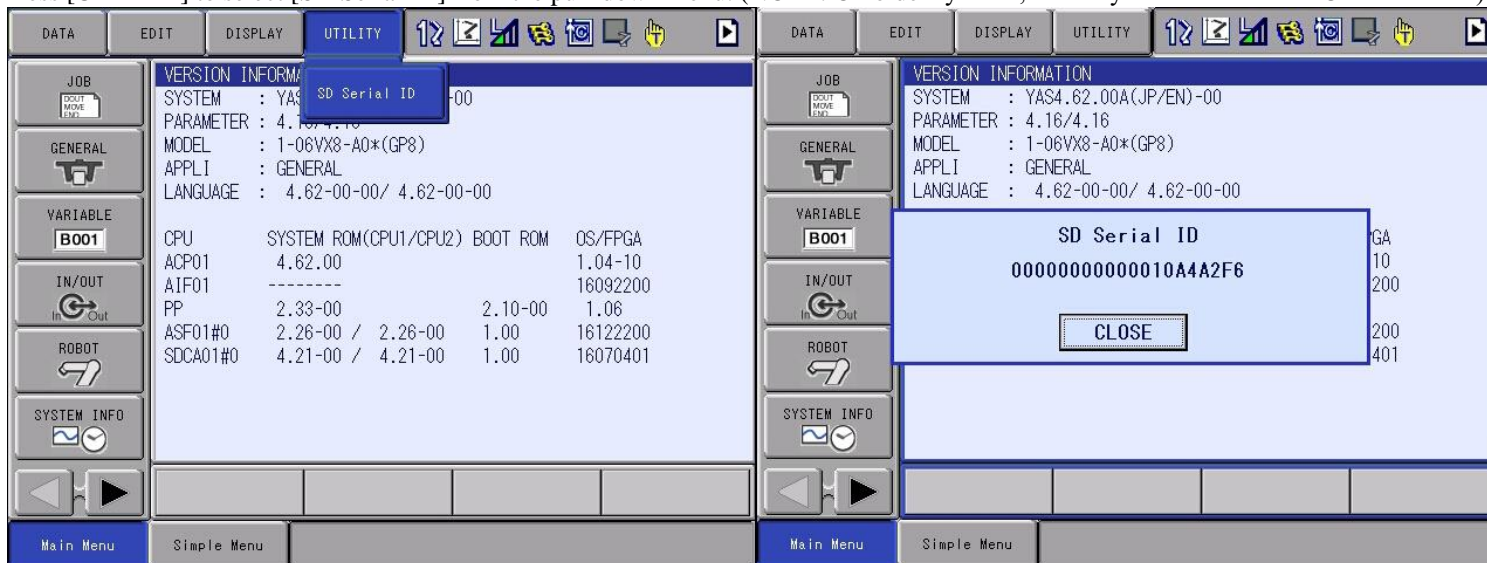
Obtain Serial ID and Load Files Using One-Time Password

Introduction

In some circumstances, Partner Support will work with customers to enable a “one-time password” mode to modify system configurations. This document outlines the procedure to collect the current configuration data, provide it to Partner Support, and then apply modifications made by our team. NOTE: “one-time” is a misnomer. Typically, the passwords we provide are valid for seven days from the date of issue.

Procedure

1. Obtain the internal SD or CF Serial ID number. (NOTE: This is not the serial number.)
 - 1.1. On the Pendant, select [SYSTEM INFO] and then [VERSION] to open the version screen.
 - 1.2. Press [UTILITY] to select [SD Serial ID] from the pull-down menu. (NOTE: On older systems, this may be referred to as “CF Serial ID.”)



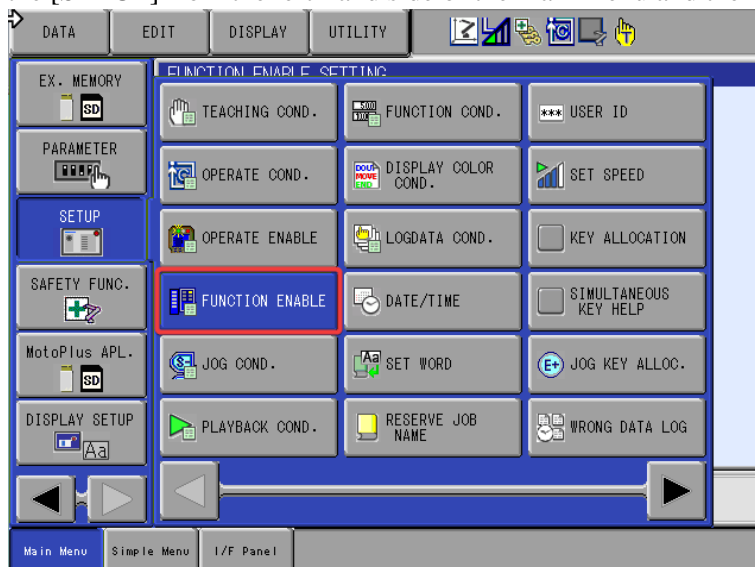
Record the Serial ID to send with the requested file(s). NOTE: you can record a screen shot to the memory device inserted in the pendant by simultaneously pressing the "AREA" and "AUX" keys.

This document captures ideas, experiences, and informal recommendations from the Yaskawa Partner Support team. It is meant to augment – not supersede manuals or documentation from motoman.com. Please contact the Partner Support team at partnersupport@motoman.com for updates or clarification.

2. **Disable the CRC check** (This step will be skipped if the FSU feature is not installed on the system. *The option will not appear if FSU is not installed.*)
 - 2.1. Login at SAFETY level security. From the pendant, select SYSTEM INFO, SECURITY, SAFETY MODE. Password is all 5's, unless changed locally or provided separately for Collaborative Robot Models.
 - 2.2. Arrow to the right-hand side of the main menu.

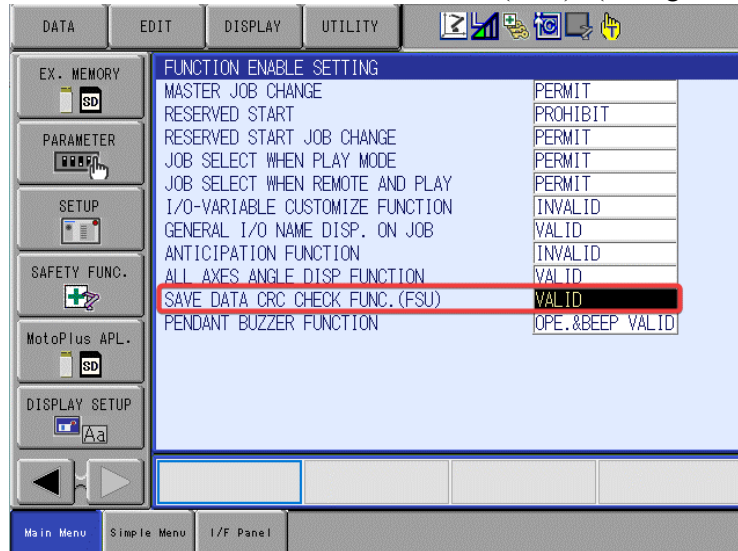


- 2.2. Choose the [SETUP] from the left-hand side of the main menu and then [FUNCTION ENABLE].



This document captures ideas, experiences, and informal recommendations from the Yaskawa Partner Support team. It is meant to augment – not supersede manuals or documentation from motoman.com. Please contact the Partner Support team at partnersupport@motoman.com for updates or clarification.

2.3. Toggle the “SAVE DATA CRC CHECK FUNC. (FSU)” (Change to “INVALID”).

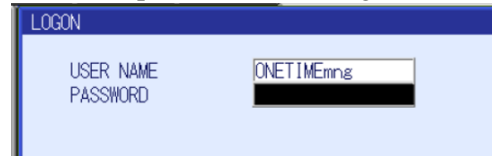


3. Save the file(s):

- 3.1. Insert media (either USB or Compact Flash) into the teach pendant.
 - 3.2. Arrow to the right-hand side of the main menu
 - 3.3. Choose the [EX. MEMORY] icon
 - 3.4. Choose [DEVICE] and set to the proper media that was inserted into the pendant.
 - 3.5. Choose [SAVE]
 - 3.6. Press Select on the any files that were requested. A star should appear next to them
 - 3.7. Press the enter button and a prompt will appear. Answer yes to the prompt
4. Email all the files and your Serial ID to partnersupport@motoman.com If you have trouble getting files to us via email, you can use our “FTA” file transfer service, described below.
 - Access our FTA portal at <https://fta.motoman.com/>
 - Click on “Public Access” and enter the required information.
 - Please use partnersupport@motoman.com as the Recipient’s Email.

This document captures ideas, experiences, and informal recommendations from the Yaskawa Partner Support team. It is meant to augment – not supersede manuals or documentation from motoman.com. Please contact the Partner Support team at partnersupport@motoman.com for updates or clarification.

- Click on “Upload files” button at the bottom of the screen.
 - On the following screen, if you click on the “Basic Uploader” button, you can drag and drop files to the FTA window to upload.
5. _Once you receive files from Partner Support, verify the controller is in the correct operating mode.
- To load most files, you will need to be in NORMAL operating mode. Boot the controller normally. All menus and functions will be available on the Teach Pendant.
 - **To load a CMOS.BIN file, the controller must be in MAINTENANCE MODE.** To enter MAINTENANCE MODE, turn the controller power off. Hold the pendant MAIN MENU key while powering on to enter MAINTENANCE MODE. Limited menus and functions will be available on the pendant.
6. Login to one-time management mode.
- **NOTE** If the Password Protect Function is enabled, there is a secondary administrator account for One-time password use.**
Log in with the Username: ONETIMEmng and enter the One-time password that was generated. (Skip to section 6.4)

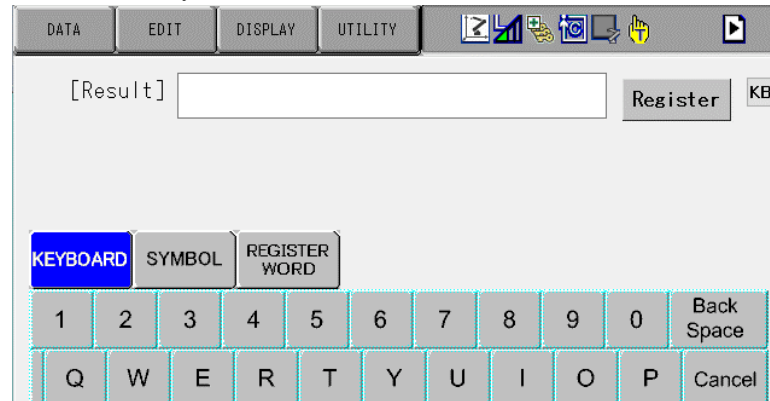


- 6.1. Select main menu [SYSTEM] and then sub menu [SECURITY] to open the security screen.
- 6.2. Press [Select] again to open the selection list. Select MANAGEMENT and login using your management password. This will allow you to then select [one time manage mode] from the same list and login using the One-time password, as shown below.



This document captures ideas, experiences, and informal recommendations from the Yaskawa Partner Support team. It is meant to augment – not supersede manuals or documentation from motoman.com. Please contact the Partner Support team at partnersupport@motoman.com for updates or clarification.

6.3. Character input keypad is shown. Input the one-time security code emailed from Yaskawa



6.4. When the one-time security code and CF-ID of the main CPU are correct and the one-time security code is unexpired, the mode is switched to one-time management mode. **You will see three green keys at the top of the pendant status bar.**



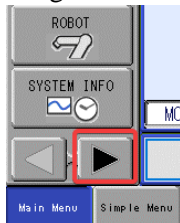
7. Load the changed file(s):

- 7.1. Insert media (either USB or Compact Flash) into the teach pendant.
- 7.2. Arrow to the right-hand side of the main menu
- 7.3. Choose [EX. MEMORY]
- 7.4. Choose [DEVICE] and set to the proper media that was inserted into the pendant in step 3.
- 7.5. Choose [LOAD]
- 7.6. Arrow down to the parameter option and press select
- 7.7. Choose the files which were received from partnersupport@motoman.com and press select on each of them. A star should appear next to the file name(s).
- 7.8. Press the enter button and a prompt will appear. Answer yes to the prompt

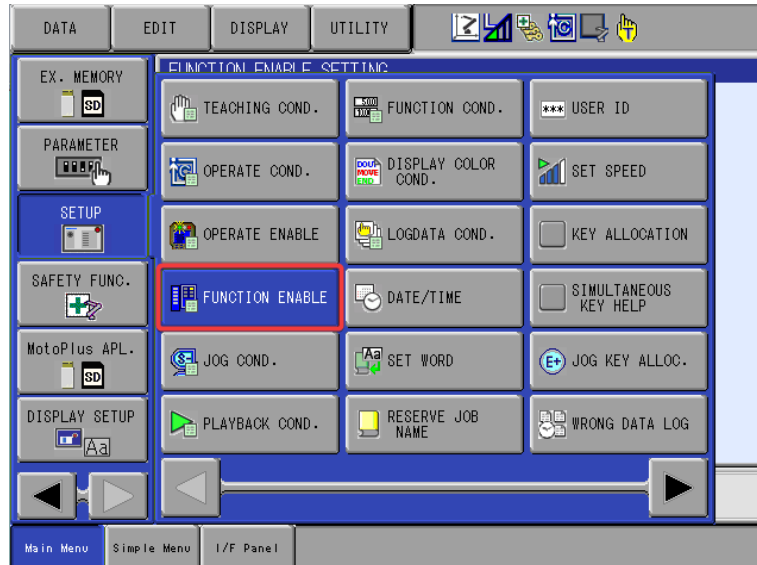
This document captures ideas, experiences, and informal recommendations from the Yaskawa Partner Support team. It is meant to augment – not supersede manuals or documentation from motoman.com. Please contact the Partner Support team at partnersupport@motoman.com for updates or clarification.

8. **Enable the CRC check** (this step will be skipped if the FSU feature is not installed on the system. The option will not appear):

8.1. Arrow to right-hand side of the main menu.



8.2. Choose the [SETUP] icon from the left-hand side of the main menu. Then, select [FUNCTION ENABLE]



8.3. Toggle the “save data CRC CHECK FUNC(FSU)”

9. Cycle power on the robot controller using the main breaker on the controller door. Upon reboot the function/change should now be active.